

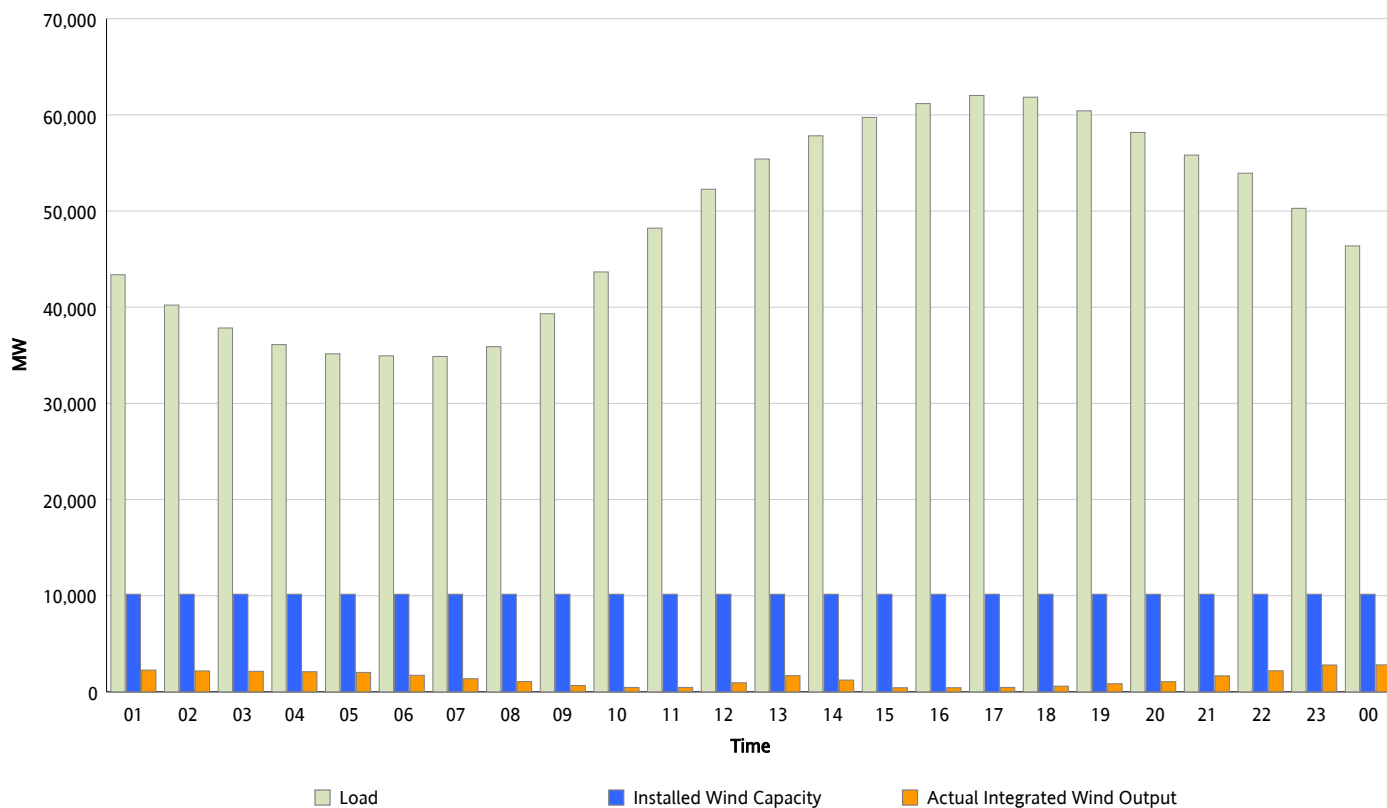


ERCOT Grid Operations

Wind Integration Report : 06/29/2013

Peak Load	62,014 MW
Load Peak Hour (HE)	17
Wind Over Peak	462 MW
Wind Record 05/02/13	9,674 MW
Max Wind Value*	2,990 MW
Wind Peak Time	22:44
Wind Integration %	6.06 %

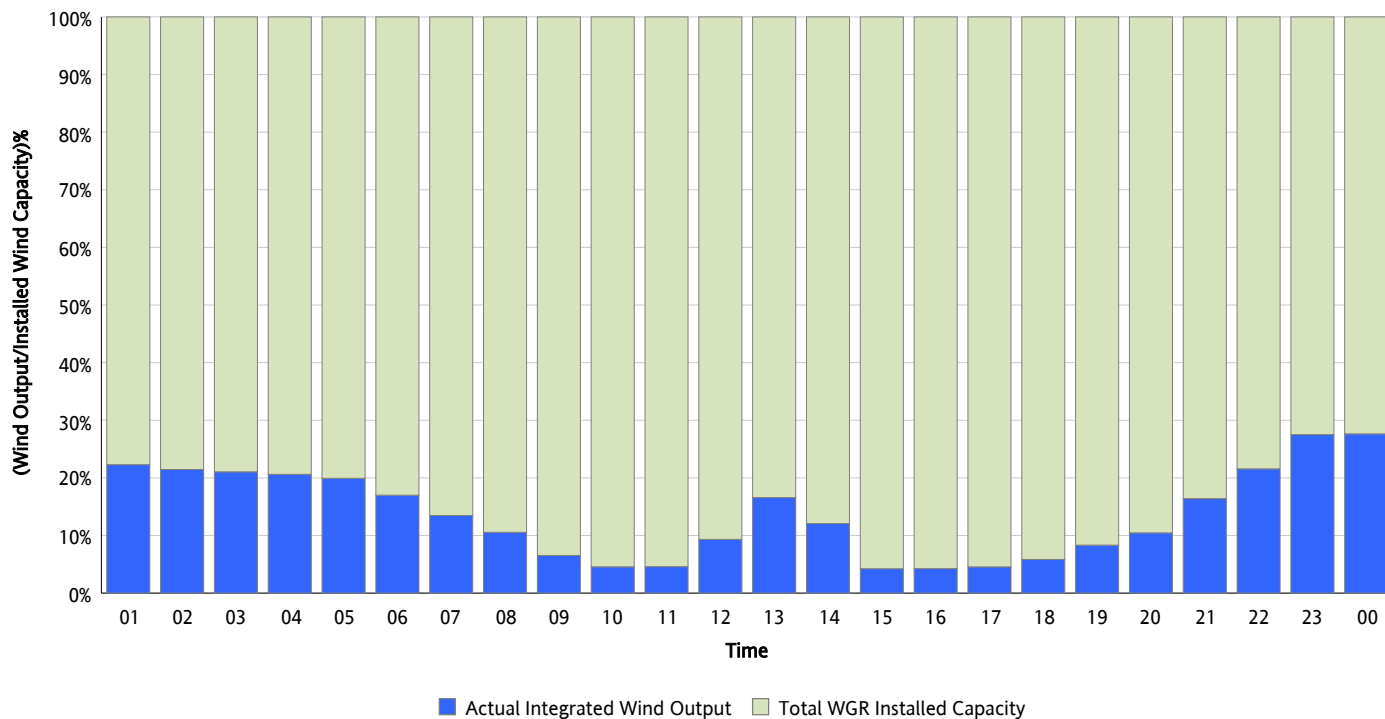
Hourly Average Actual Load vs. Actual Wind Output
06/29/2013



** Wind Record and Wind Max represent instantaneous values and the rest of the values are integrated over the hour*

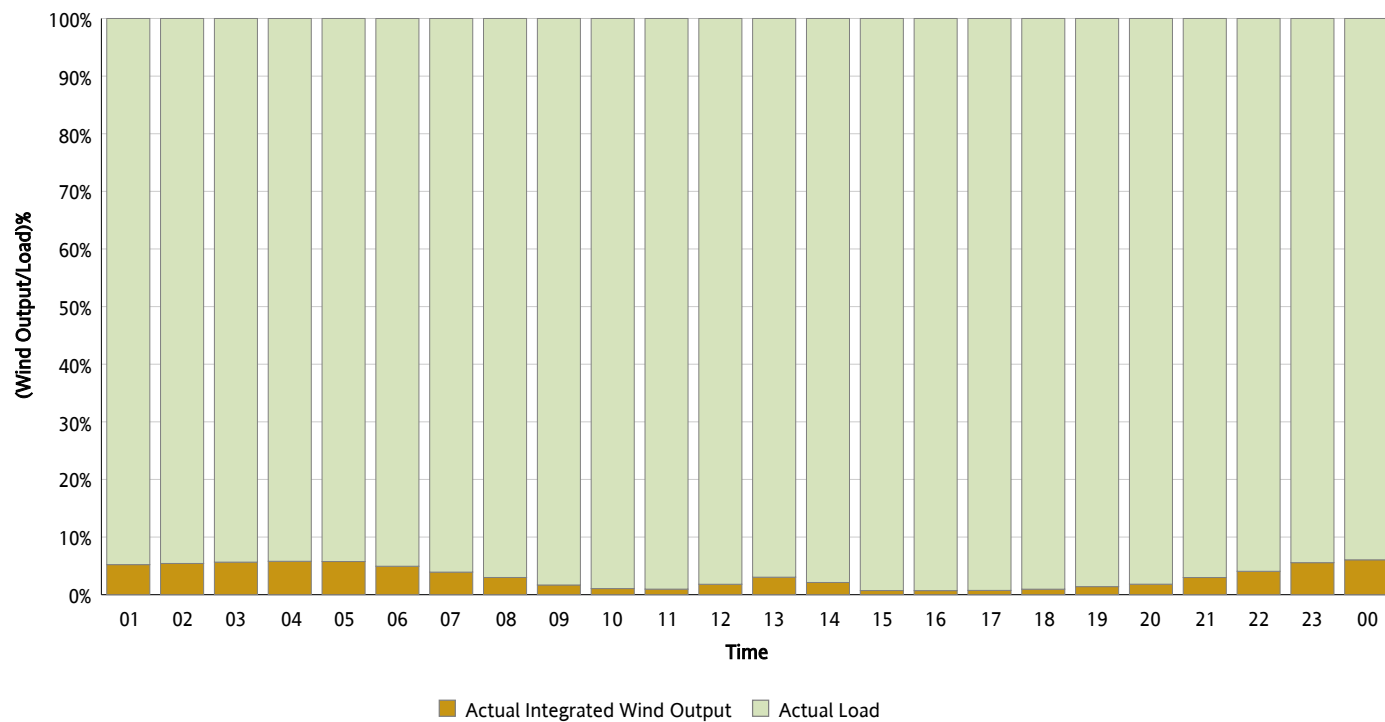
Actual Wind Output as a Percentage of the Total Installed Wind Capacity

06/29/2013



Actual Wind Output as a Percentage of the ERCOT Load

06/29/2013



ERCOT Load vs. Actual Wind Output

06/22/2013 - 06/29/2013

